

Wednesday, October 9, 2013

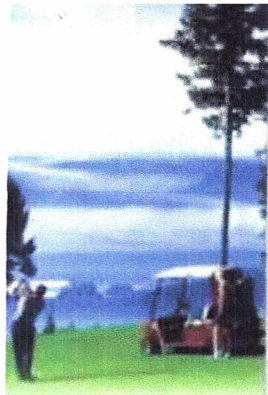
**RE: CROWN ISLE RESORT and GOLF COMMUNITY –
Tour and Travel Rates**

On behalf of Crown Isle Resort & Golf Community, I would like to thank you for your consideration of our property for your upcoming groups or FIT programs. We are pleased to provide the following **'Net Tour Rates'** rates for perusal and consideration.

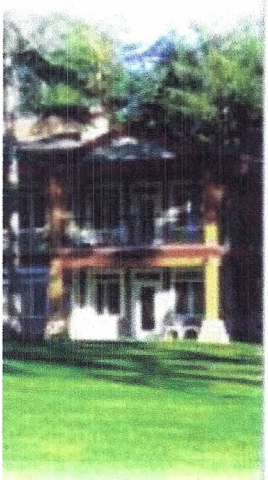
Off Season January 1, 2014 – April 30, 2014			Peak Season May 1, 2014 – September 30, 2014			Off Season October 1, 2014 – December 31, 2014		
Room Tier	Room Type	Rate	Room Tier	Room Type	Rate	Room Tier	Room Type	Rate
Fairway Room Tier (Tier 1)	FQ, FQM, QQM, FQQM, 1QSM, 1QS	\$80	Fairway Room Tier (Tier 1)	FQ, FQM, QQM, FQQM, 1QSM, 1QS	\$105	Fairway Room Tier (Tier 1)	FQ, FQM, QQM, FQQM, 1QSM, 1QS	\$80
Suites Tier (Tier 2)	1KS, 1QSJ, 1KSJ, 1KDJ	\$130	Suites Tier (Tier 2)	1KS, 1QSJ, 1KSJ, 1KDJ	\$155	Suites Tier (Tier 2)	1KS, 1QSJ, 1KSJ, 1KDJ	\$130
Quad Tier (Tier 3)	2QQ, 2QQE, QQTT, 1KSL, CITW	\$135	Quad Tier (Tier 3)	2QQ, 2QQE, QQTT, 1KSL, CITW	\$195	Quad Tier (Tier 3)	2QQ, 2QQE, QQTT, 1KSL, CITW	\$135

Tel: (250) 703-5050
Fax: (250) 703-5051
Toll Free: (888) 338-8439
info@crownisle.com

399 Clubhouse Drive
Courtenay, BC
Canada V9N 9G3



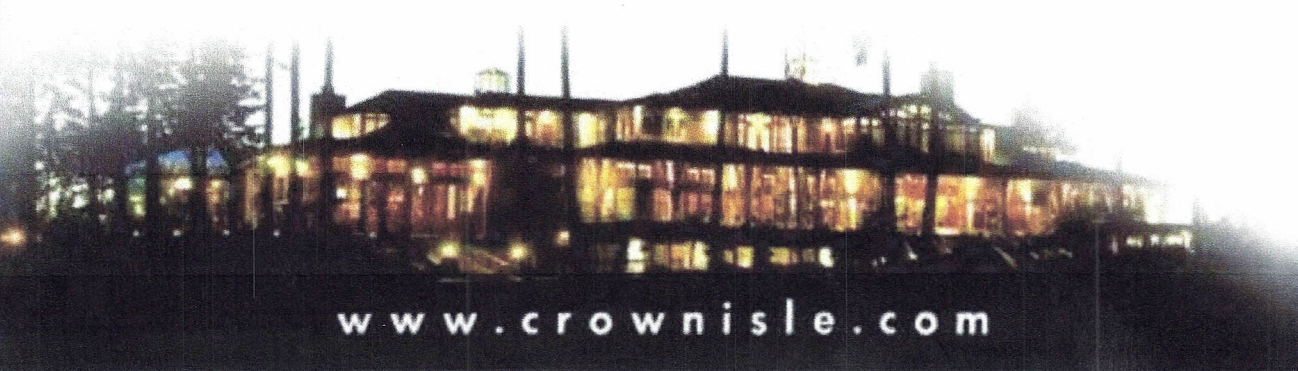
GOLF SHOP
RESORT CENTRE
VILLAS
REAL ESTATE
RESTAURANTS
GOLF ACADEMY



QQM (2)	Fairway Canterbury	2 Queen Beds
FQ (2)	Fairway Aberdeen	1 Queen Bed
FQQ (4)	Fairway Aberdeen	2 Queen Beds
FQM (2)	Fairway Canterbury	1 Queen Bed
FQQM (24)	Fairway B/C/D/E/F/I	2 Queen Beds
QQT (4) (<i>Quad Occupancy</i>)	Fairway Deluxe	2 Queen Beds / 2 Twin Beds
1QSM (2)	Junior Suite Canterbury	1 Queen Bed / 1 Sofa Bed
1QS (3)	1 Bedroom Aberdeen	1 Queen Bed / 1 Sofa Bed
1QSJ (10)	1 Bedroom Aberdeen w/ Jacuzzi	1 Queen Bed / 1 Sofa Bed
1KDJ (1)	Crown Suite	1 King Bed
2QQ (2) (<i>Quad Occupancy</i>)	Two Bedroom Aberdeen	2 Queen Beds
1KSJ (23)	1 Bedroom B/C/D/E/F/I w/ Jacuzzi	1 King Bed / 1 Sofa Bed
1KS (4)	1 Bedroom Glasgow	1 King Bed / 1 Sofa Bed
1KSL (4) (<i>Quad Occupancy</i>)	Loft Unit Glasgow	1 King Bed / 1 Sofa Bed / 2 Queen

Tel: (250) 703-5050
Fax: (250) 703-5051
Toll Free: (888) 338-8439
info@crownisle.com

399 Lighthouse Drive
Courtenay, BC
Canada V9N 9G3



www.crownisle.com

- We have several different room types to choose from but for your convenience we have organized the rates into three Room Tiers
- Rates are based on single or double occupancy for Room Tiers 1 & 2, and for quad occupancy for Room Tier 3, and do not include taxes and are net non commissionable
- Cancellation Policy is 7 days advance notice to not be charged 100% for the first night and 50% for each additional night booked
- This applies to all days that are booked for FIT Bookings
- All units are non smoking and no pets are permitted on the property
- Complimentary Fitness Facility Usage
- Free local fax service and free local calls
- Use of wired or wireless Internet is free of charge
- Complimentary up-grades based on availability
- 10% discount in Pro Shop (excluding golf clubs)

Thank you for your continued interest in Crown Isle Resort & Golf Community. We would be happy to send along whatever additional information you may require. In the meantime, we look forward to having you with us at Crown Isle Resort and Golf Community.

Regards,

Maris Russell
Group Sales

Tel: (250) 703-5050
Fax: (250) 703-5051
Toll Free: (888) 338-8439
info@crownisle.com

399 Clubhouse Drive
Courtenay, BC
Canada V9N 9G3

2014 Golf Rates

Tour Operators / Incentive Planners

	Winter		Shoulder		Peak		Shoulder		Winter	
	Jan 1 - Mar 31		April		May 1 - Sept 30		October		Nov 1 - Dec 31	
	Reg	Net	Reg	Net	Reg	Net	Reg	Net	Reg	Net
Daily	\$ 64.00	\$ 50.00	\$ 79.00	\$ 60.00	\$ 109.00	\$ 85.00	\$ 79.00	\$ 60.00	\$ 64.00	\$ 50.00
Twilight			\$ 59.00	\$ 45.00	\$ 79.00	\$ 61.00	\$ 59.00	\$ 45.00		
Second Round			\$ 45.00	\$ 40.00	\$ 55.00	\$ 55.00	\$ 45.00	\$ 40.00		
TaylorMade Rental Clubs		\$ 49.00		\$ 49.00		\$ 49.00		\$ 49.00		\$ 49.00

All rates quoted above are subject to applicable taxes

Daylight Savings Times

Note

All rates quoted include shared golf car and warm-up on the practice facility.

Aeration - Dates / Rates:

All greens will be aerated, sandied, brushed and packed, over a two day period, weather permitting.
Spring Aeration: 14 and 15 April 2013
Fall Aeration: 25 and 26 August 2013

Golf Cars

Include coolers with ice, towels, tees and divot repair tools.

Booking Policy

Tour Operators may book up to one year in advance for Golf Package guests
Tour Operators will take full responsibility for all advance bookings

Cancellation Policy

All tee time cancellations or reduction in numbers (eg. four guests becoming three) must be made a minimum of 48 hours in advance.
Any cancellations within the 48 hours will be subject to a cancellation fee of \$35.00 + GST per guest.
All no shows will be charged at the applicable net rate shown above.

Dress Code

Men: Collared or mock turtle neck shirts and tailored pants or shorts.
Ladies: Shirts or blouses and skirts, skorts, slacks or tailored shorts.

Ripped or torn jeans, cut-offs, athletic shorts, sweat pants, tank tops, undershirts, flip flops, athletic jerseys and halter tops are not allowed.
Soft spikes only, metal spikes are not allowed.

Alcohol

Due to Liquor Regulations, personal alcoholic beverages are not allowed on the golf course.

Promotions

Special Rate Promotions (Commissionable) will be outlined by separate memo as they occur.